

**Appendix 11:** Copy of Reference (16), which shows Photos and figures of Honda Electro Gyroator.

**Photos and Figures of Honda Electro Gyroator.**

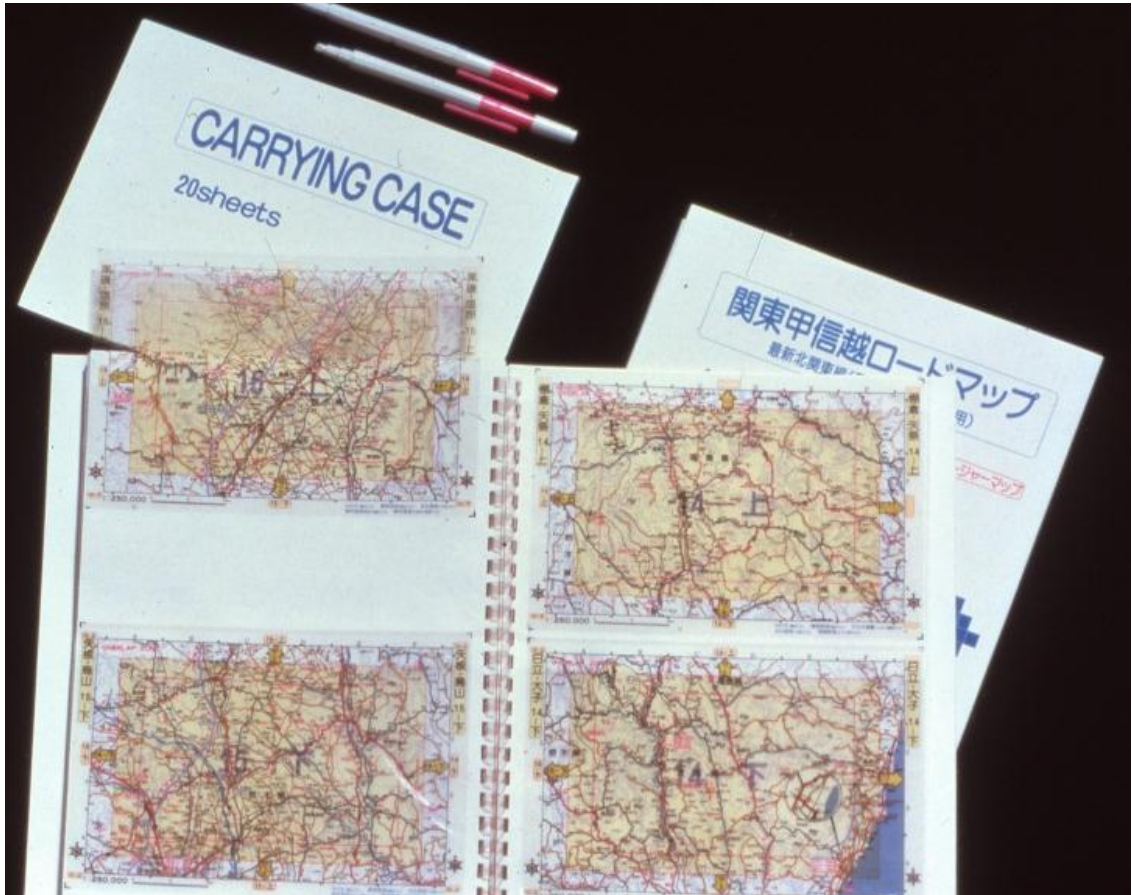


Fig. 1: Special road map and marking pens .



Fig. 2: HONDA Marking Pen

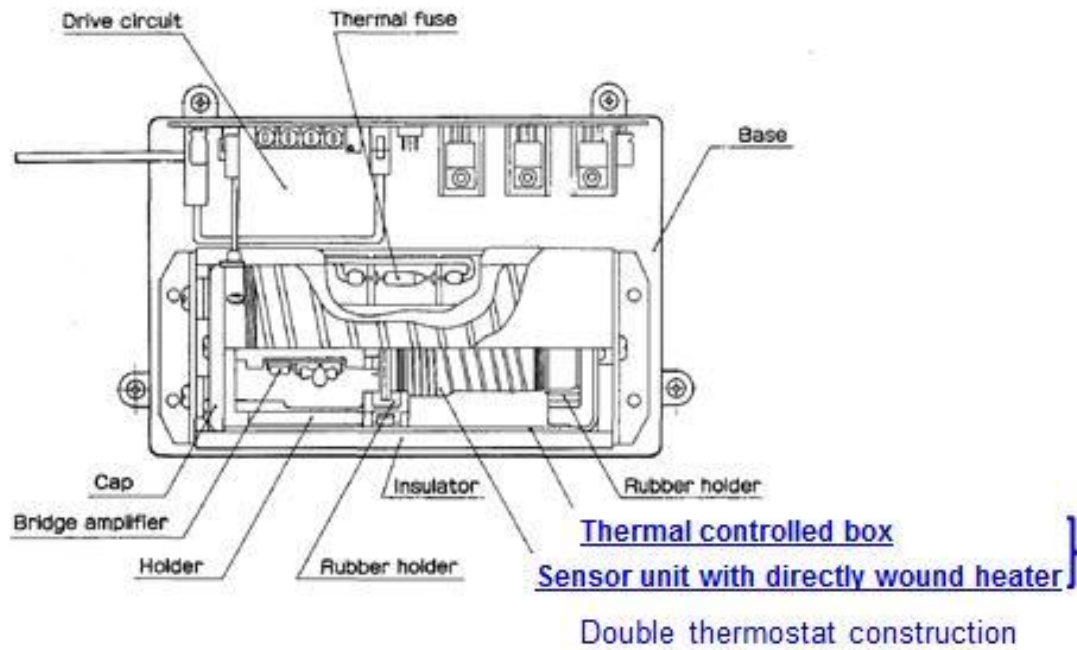
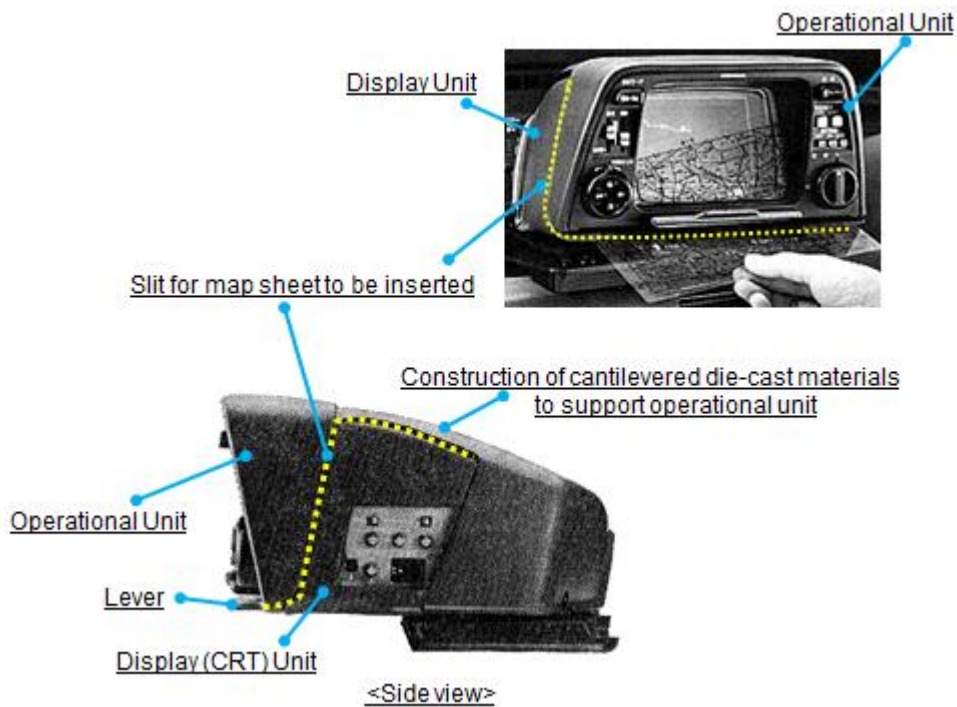


Fig. 3 Construction of gas rate gyroscope



(a) Construction of display equipment to set map sheet

Fig. 4: How to set road map sheet into display equipment



(b) Process to set road map sheet

Fig. 4: How to set road map sheet into display equipment



Fig. 5: Switches configuration of display equipment (front view)

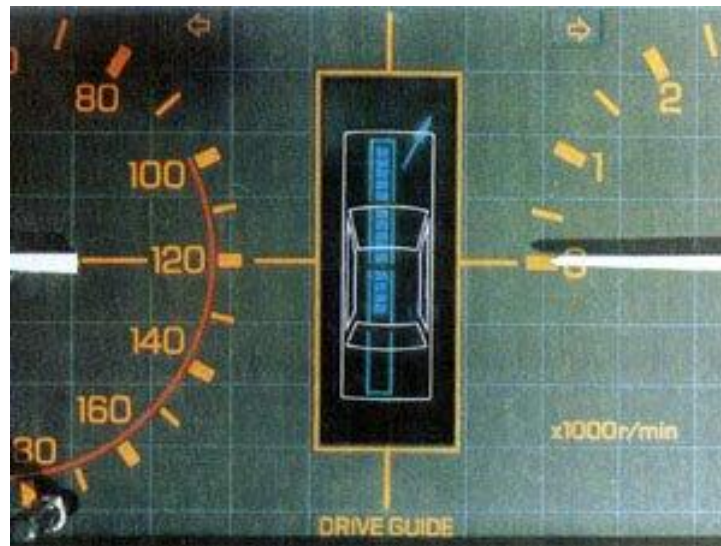


Fig. 6: Display example of “Drive guide system” introduced from Nissan Motor, 1981

(Reference from JSAE Home 240, Landmarks Top)

[http://www.jstae.or.jp/autotech/data\\_e/7-2e.html](http://www.jstae.or.jp/autotech/data_e/7-2e.html)

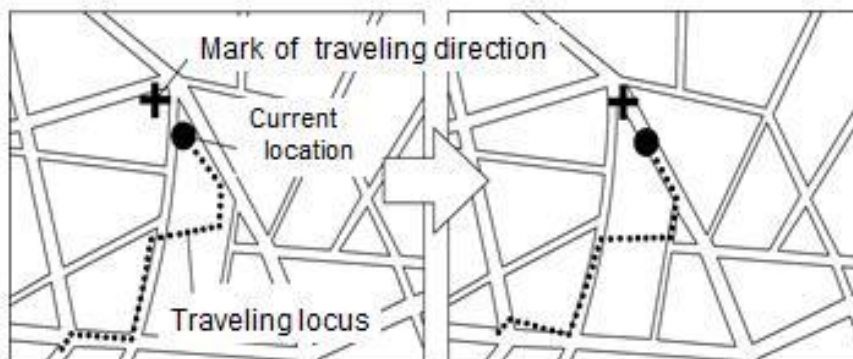


Fig. 7: Concept of map matching

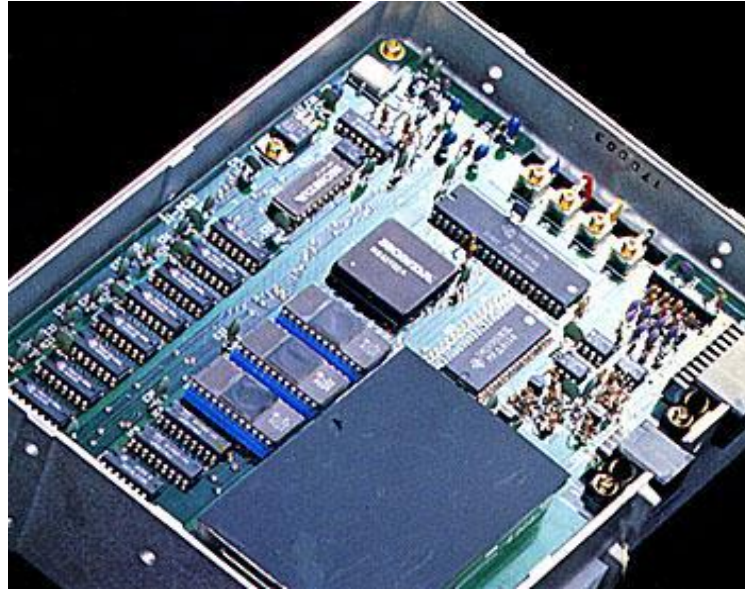


Fig. 8: Printed circuit board in computer unit.



Fig. 9: Mileage sensor attached to transmission



Fig. 10: Outside construction of gas-rate gyro sensor

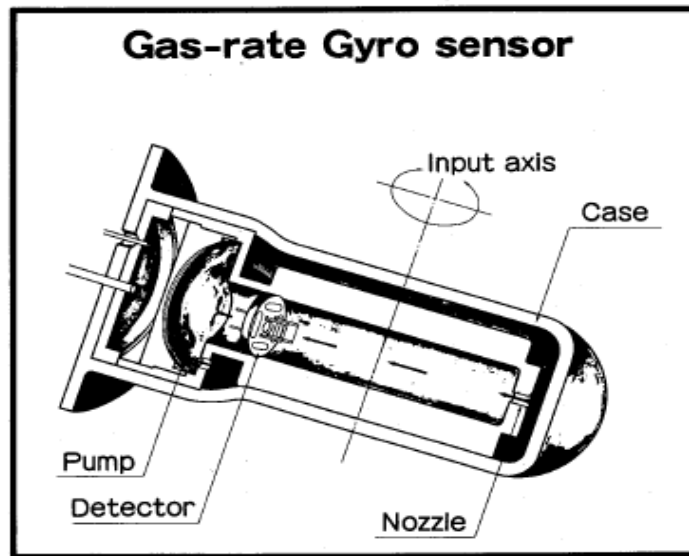


Fig. 11: Composition of gas rate gyroscope sensor.